

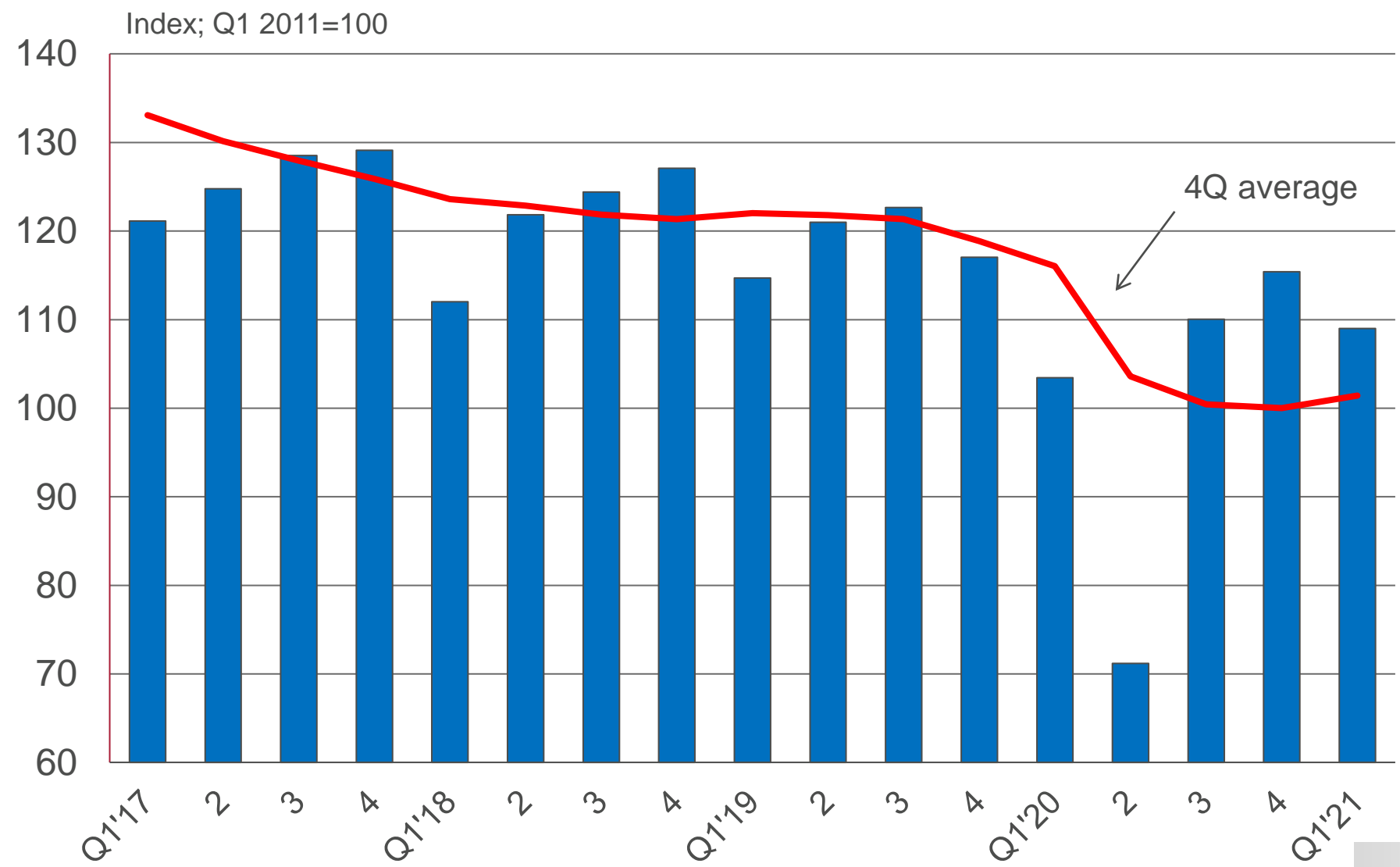
DIVERSIFICATION
DRIVING GROWTH



Afrimat Construction Index

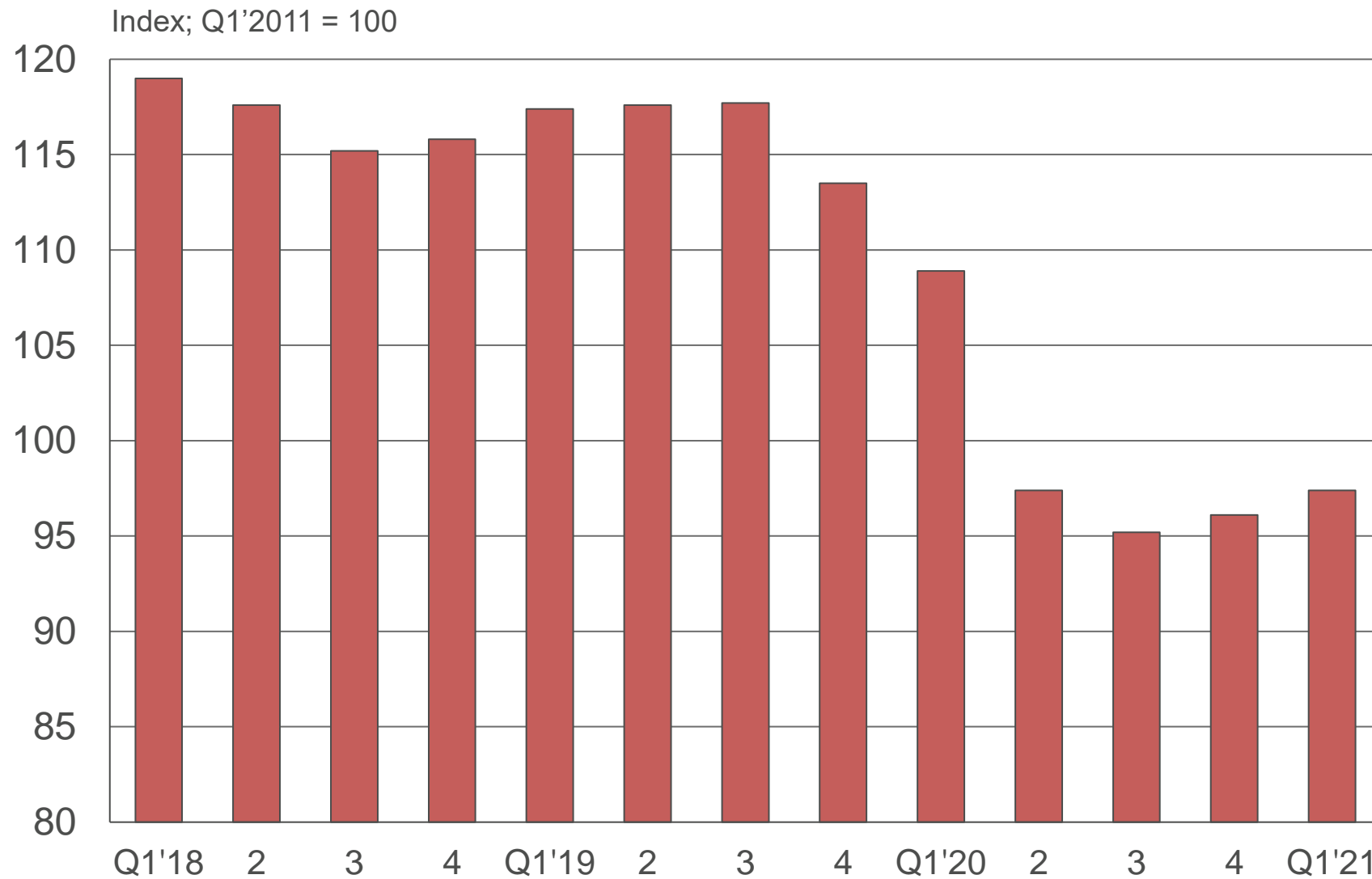
Quarter 1 | 2021
Dr Roelof Botha

Afrimat Construction Index (ACI) – 1st quarter 2021



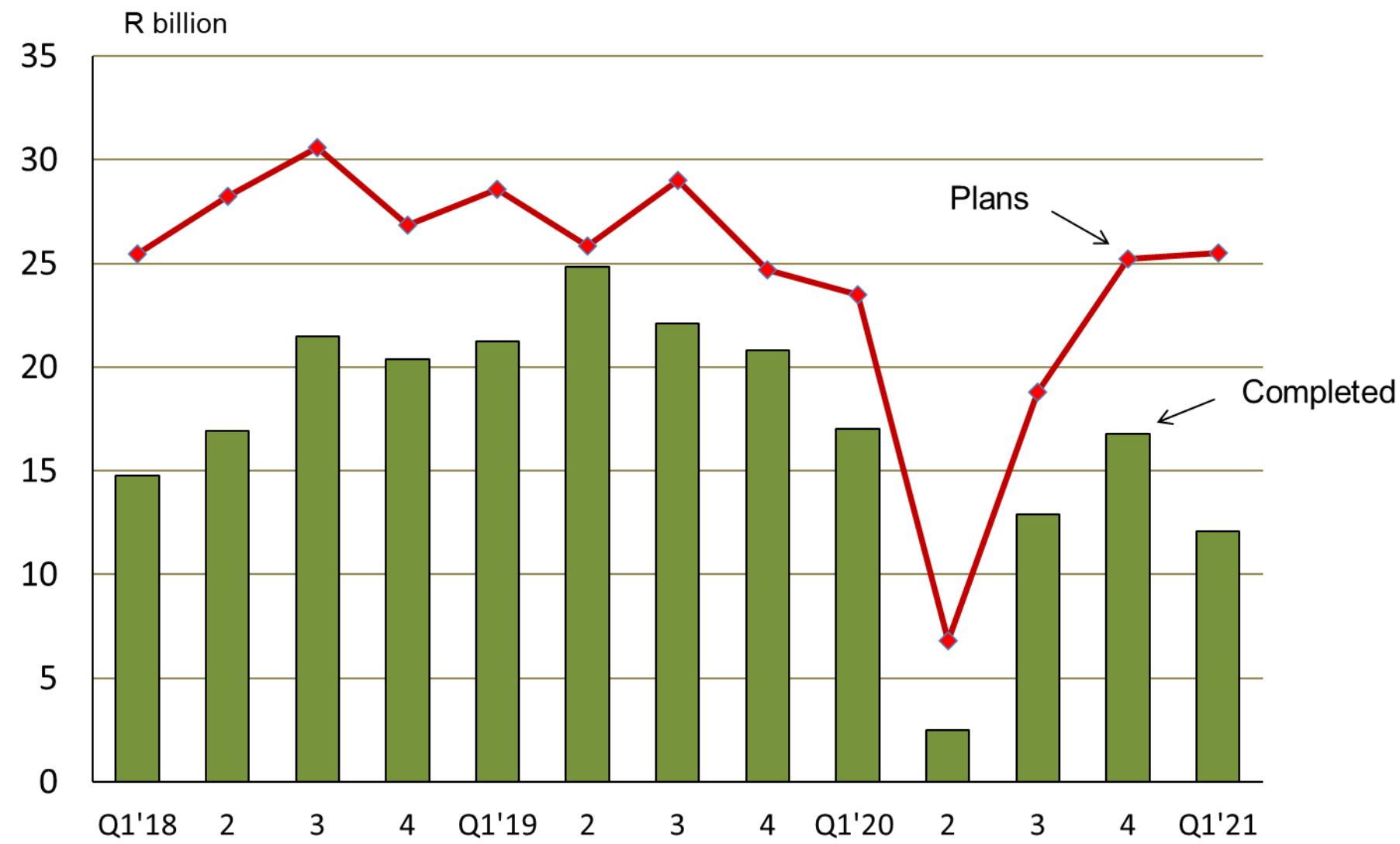
Sub-index for building material sales (4-quarter average)

(Sources: Stats SA; own calculations)



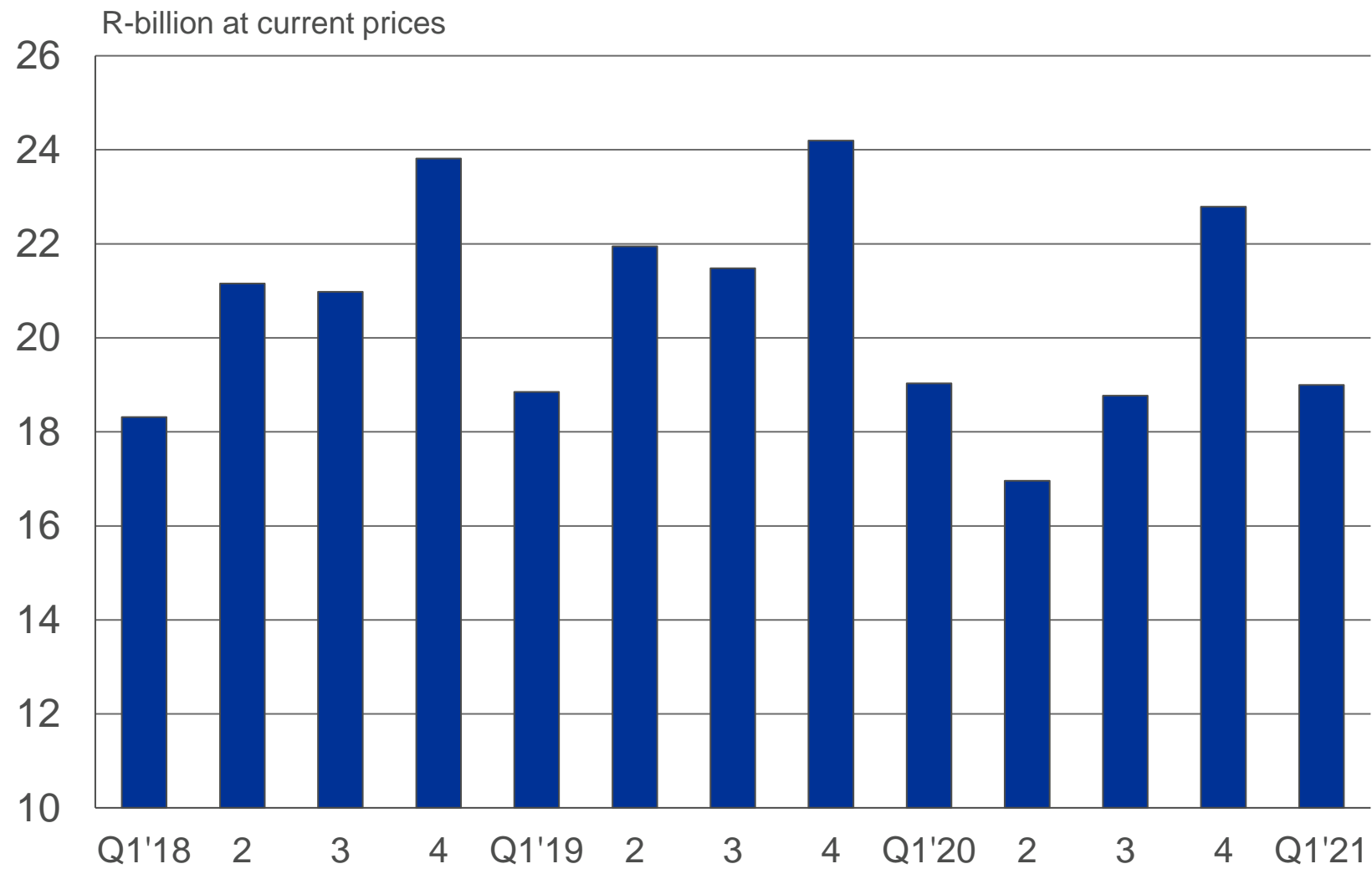
Value of building plans passed & buildings completed (current prices)

(Source: Stats SA)



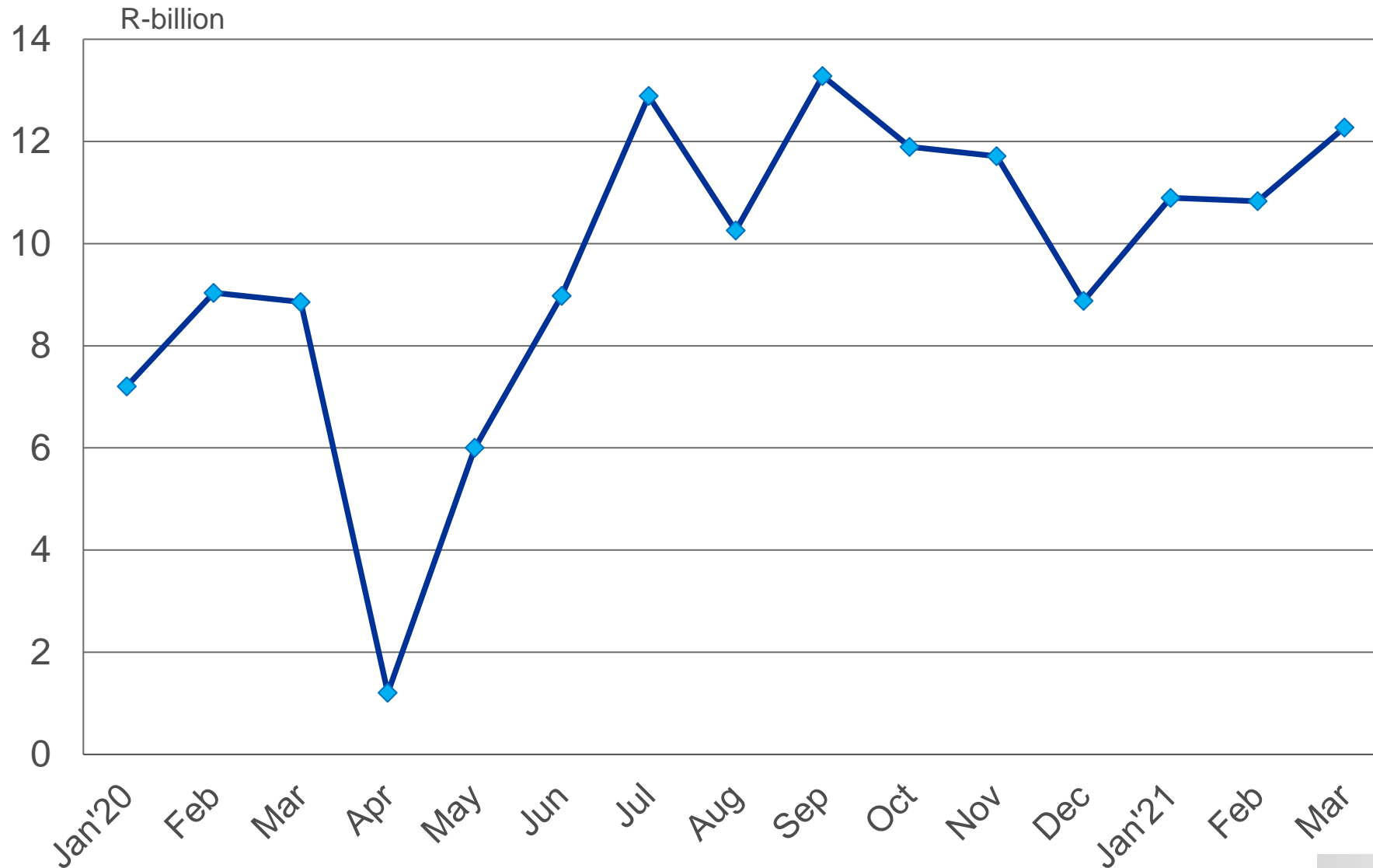
Remuneration of employees in construction

(Source: Stats SA)



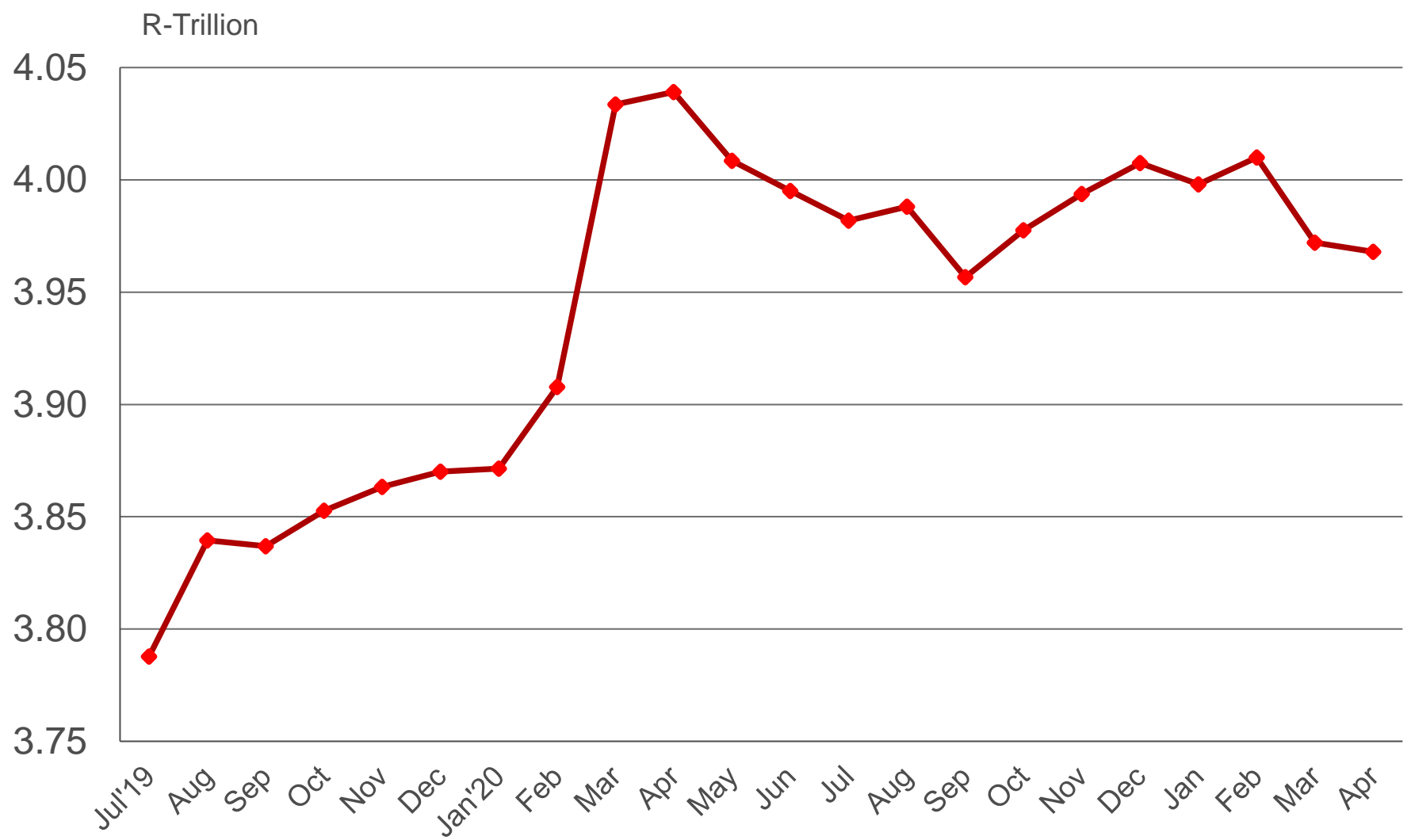
Value of sales of construction materials (wholesale) at current prices

(Source: Stats SA)



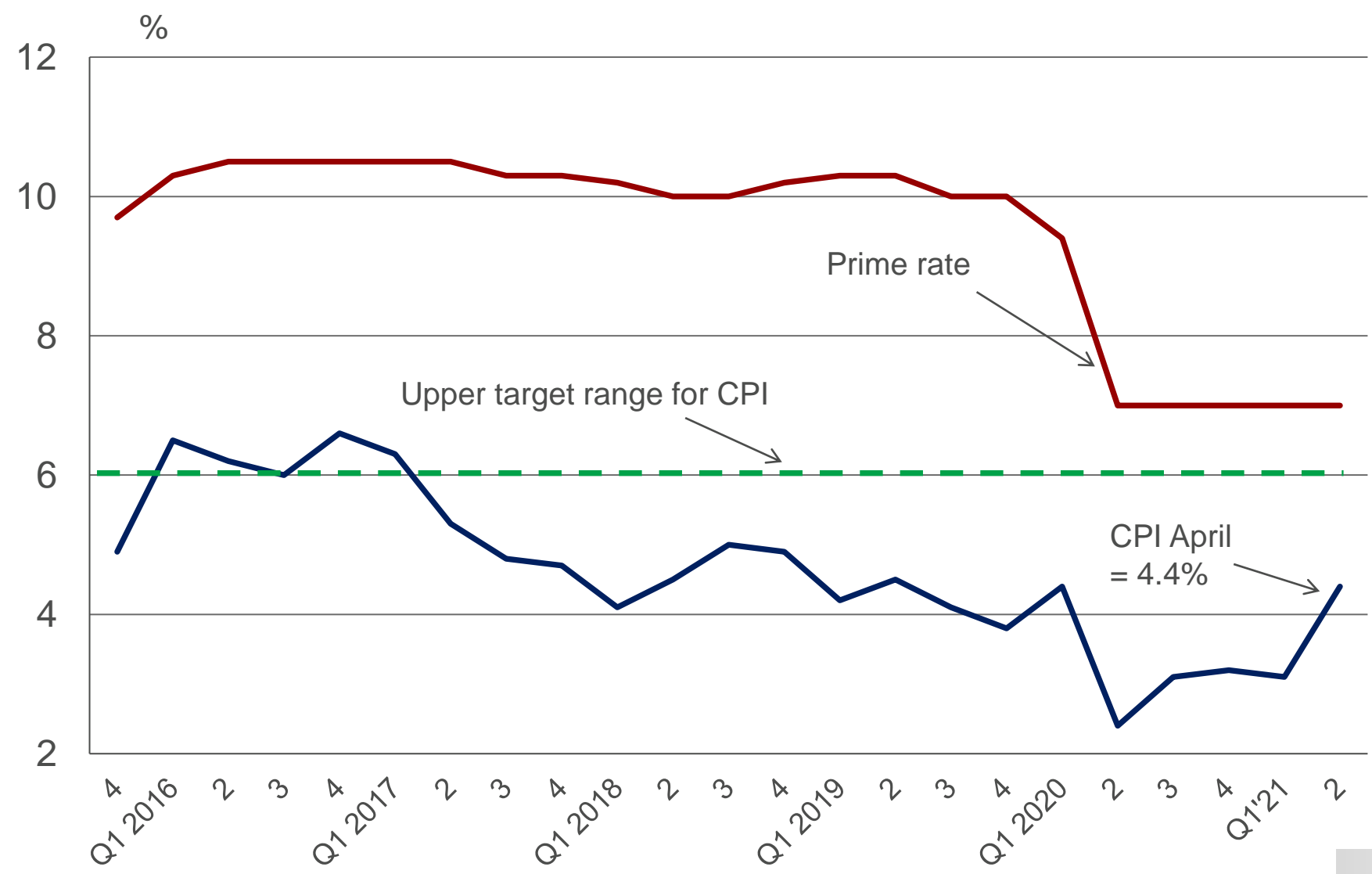
Total private sector credit extension

(Source: SARB)

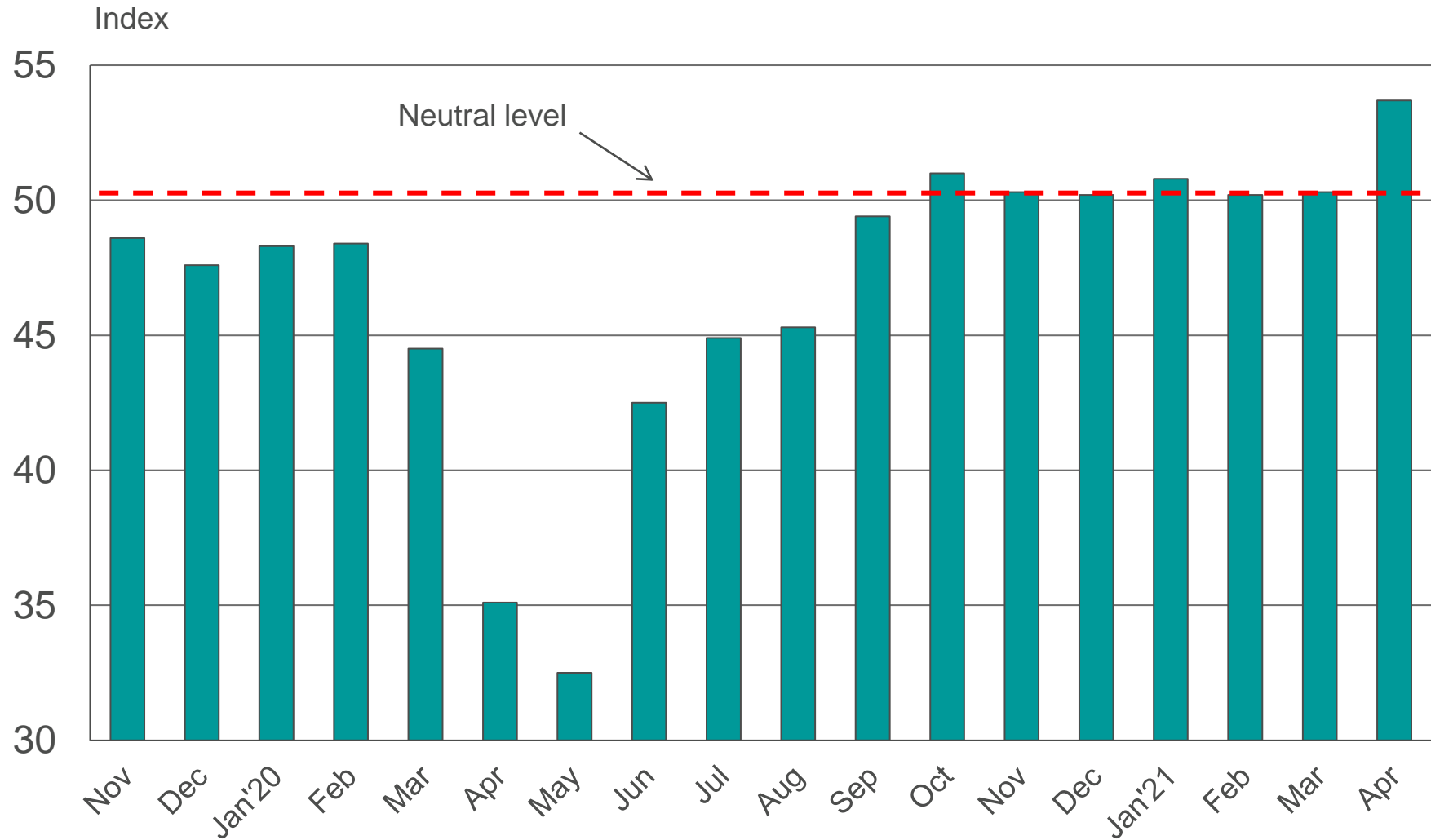


Prime rate and the CPI

(Sources: Stats SA; SARB)

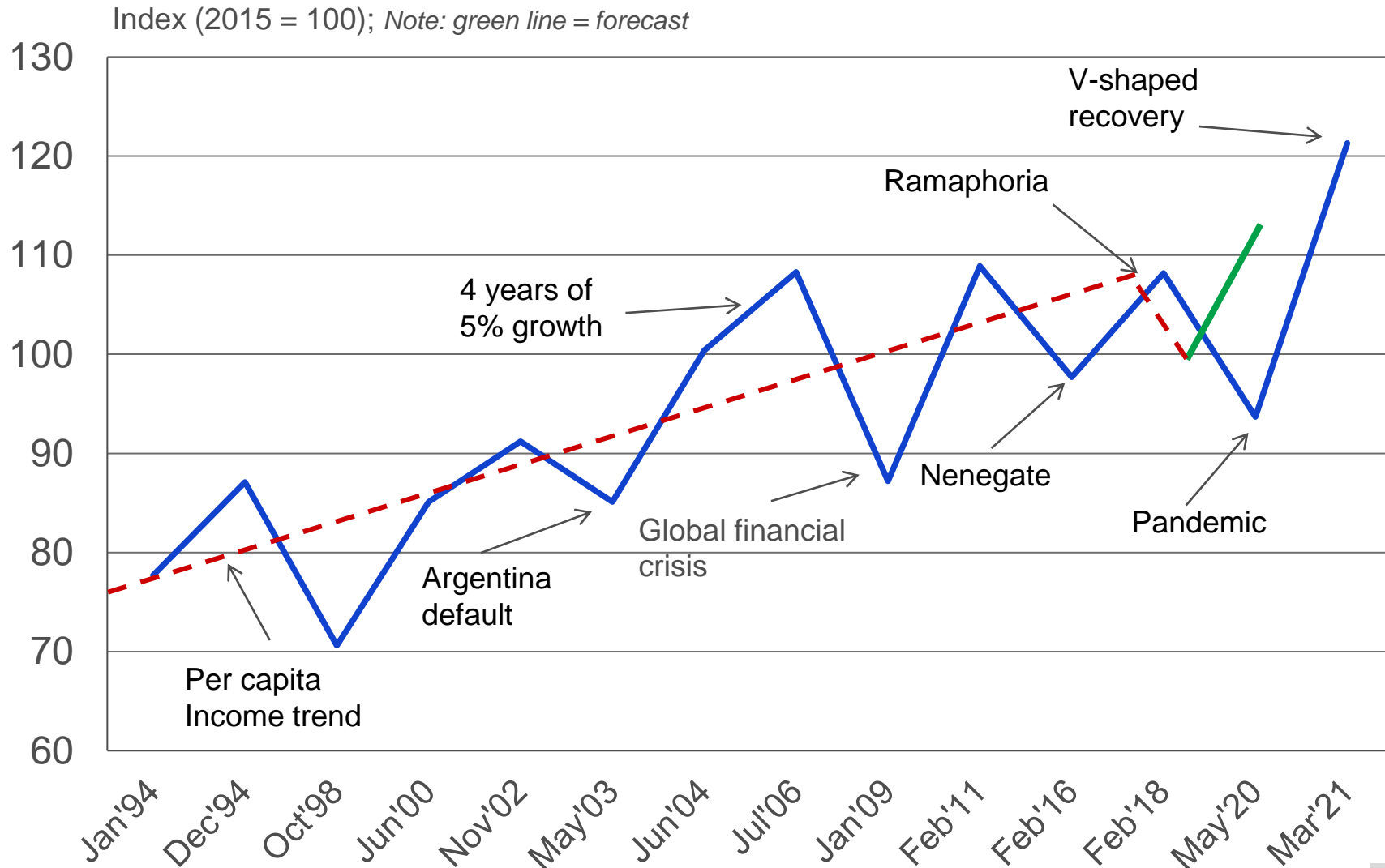


IHS Markit Composite Purchasing Managers' Index (PMI) for South Africa



Highs & lows for South Africa's leading business cycle indicator & trend line for real per capita income

(Sources: SARB; own calculations)



GDP growth forecasts for 2021 – selected participants in the *Finmedia* Economist of the Year panel

